

## One Way to Repair the Dashboard End Bracket

Having noticed that right hand side dashboard plastic mounting bracket had started to crumble around the mounting holes, I decided to have a go at repairing it with something more permanent.

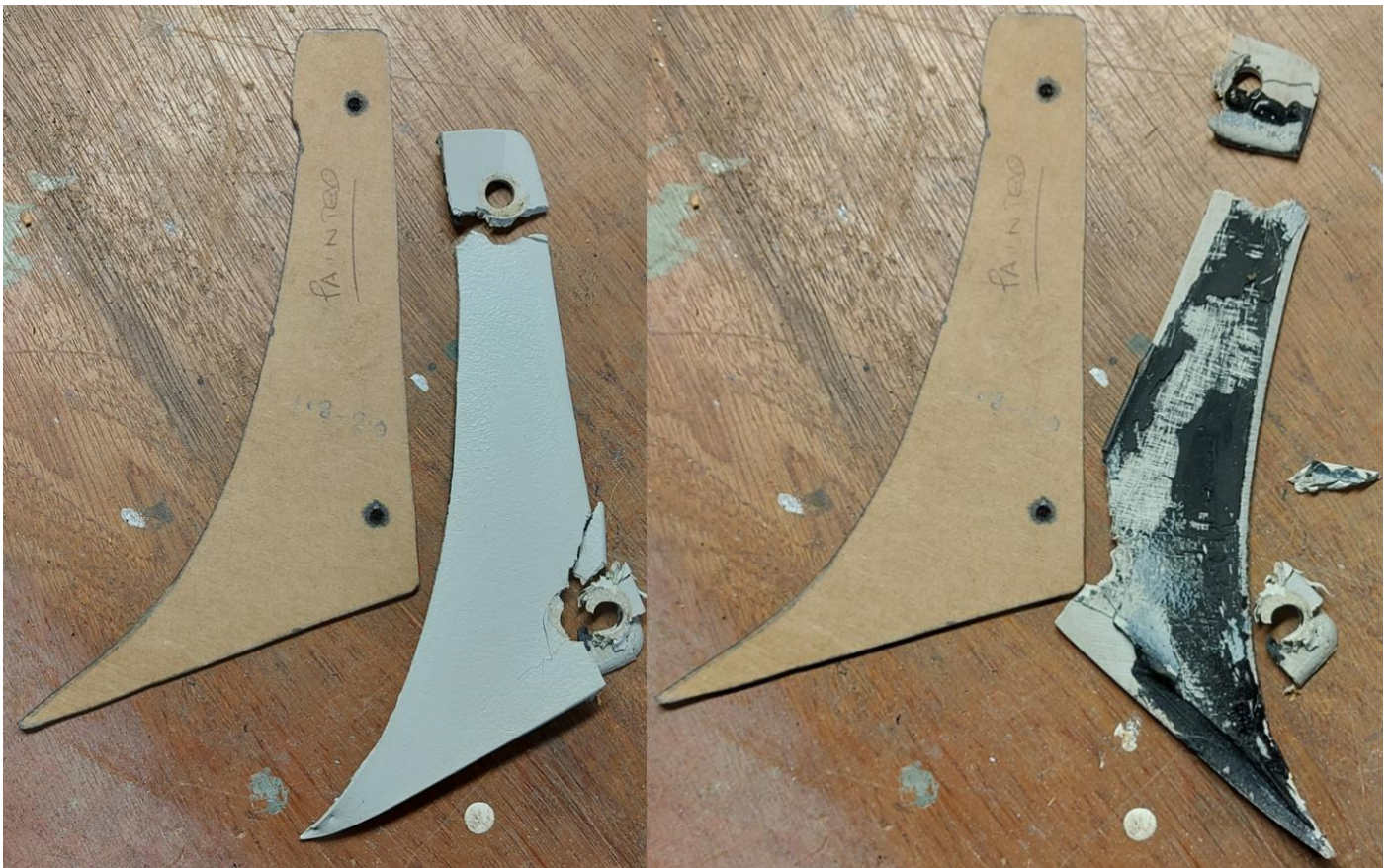
Note, I am not a fabricator, or a paint sprayer so please do not judge me!!

Below you can see that someone had already had a go at repairing the bracket previously by using a shaped piece of plastic, painting it, and then using Tiger Seal (or another black PU adhesive) to attach the plastic to the remainder of the original dashboard bracket.

I carefully separated the broken shaped piece of plastic from the remains of the original dashboard bracket and made up a cardboard template.

**Front of the shaped plastic bracket.**

**Back side of the bracket with Tiger Seal.**



I fabricated a piece of shaped 2mm Stainless-Steel and glued it to the remainder of the dashboard bracket with 24-hour epoxy resin.

**Shaped Stainless bracket attached.**





Then I tidied up the edge between the dashboard and metal bracket with a fine bead of PU adhesive (I used PU adhesive because you can paint it).

**Gap between the dashboard and the Stainless-Steel bracket sealed with PU adhesive.**



Finally, I painted the new Stainless-Steel bracket with etching primer, followed by the Figaro Shop's Interior Ivory Paint.

Note, I fitted two 6mm translucent plastic washers between the two fixing screws and the newly painted Stainless-Steel brackets to protect the new paint. I will blend the new edge of the paint into the existing dashboard paint when it has fully hardened.

